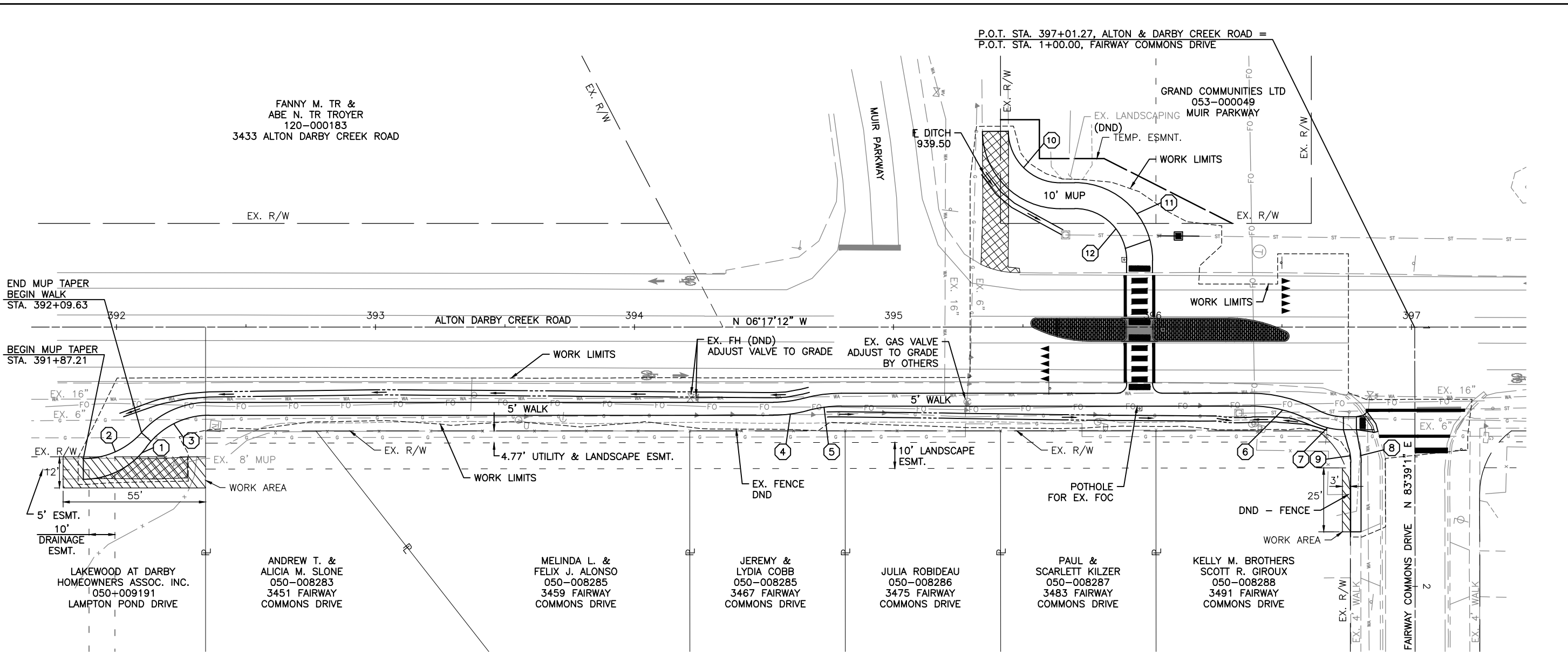


M:\LANGTIS_KC\17360892\Task 9 - Design-Cemetery Alton Darby - Sciole Darby - Muir Parkway\Transportation\Detail Design\Drawing\Plan - Alton Darby Creek Road - Plan - PLAN - ALTON DARBY CREEK ROAD - 17360892.dwg
 PLOT - ALTON DARBY CREEK ROAD - 17360892.dwg
 PLOTTED - FEB 02, 2021 11:02 AM
 PLOTTED BY - J. LANGTIS



5.5" PAVEMENT PLANING, ASPHALT CONCRETE
 PAVEMENT REMOVED - ASPHALT

<p>① CURVE DATA EDGE OF PAVEMENT MUP R = 30' T = 15.28' L = 28.26' P.C. STA. 391+87.21, 58.71' RT. R.P. STA. 391+87.21, 28.71' RT. P.R.C. STA. 392+11.48, 46.36' RT.</p>	<p>② CURVE DATA EDGE OF PAVEMENT MUP R = 30' T = 13.43' L = 25.26' P.C. STA. 391+87.21, 50.71' RT. R.P. STA. 391+87.25, 20.71' RT. P.T. STA. 392+09.63, 40.69' RT.</p>	<p>③ CURVE DATA EDGE OF WALK R = 30' T = 15.28' L = 28.26' P.R.C. STA. 392+11.48, 46.36' RT. R.P. STA. 392+35.74, 64' RT. P.T. STA. 392+35.74, 34' RT.</p>	<p>④ CURVE DATA EDGE OF WALK R = 50' T = 6.67' L = 13.27' P.C. STA. 394+53.63, 34' RT. R.P. STA. 394+53.63, 16' LT. P.R.C. STA. 394+66.74, 32.25' RT.</p>	<p>⑤ CURVE DATA EDGE OF WALK R = 50' T = 6.67' L = 13.27' P.R.C. STA. 394+66.74, 32.25' RT. R.P. STA. 394+79.85, 80.50' RT. P.T. STA. 394+79.85, 30.50' RT.</p>	<p>⑥ CURVE DATA EDGE OF WALK R = 50' T = 12.69' L = 24.86' P.C. STA. 396+37.96, 30.50' RT. R.P. STA. 396+37.96, 80.50' RT. P.R.C. STA. 396+61.81, 36.55' RT.</p>
<p>⑦ CURVE DATA EDGE OF WALK R = 25' T = 6.35' L = 12.43' P.R.C. STA. 396+61.81, 36.55' RT. R.P. STA. 396+73.74, 14.58' RT. P.T. STA. 396+73.74, 39.58' RT.</p>	<p>⑧ CURVE DATA EDGE OF WALK R = 30' T = 2.59' L = 5.17' P.C. STA. 1+47.01, 21.28' RT. R.P. STA. 1+52.15, 50.84' RT. P.T. STA. 1+52.15, 20.84' RT.</p>	<p>⑨ CURVE DATA EDGE OF WALK R = 20' T = 2.69' L = 5.35' P.C. STA. 1+46.96, 25.55' RT. R.P. STA. 1+52.24, 44.84' RT. P.T. STA. 1+52.24, 24.84' RT.</p>	<p>⑩ CURVE DATA EDGE OF PAVEMENT MUP R = 20' T = 19.83' L = 31.24' P.C. STA. 395+44.32, 75.53' LT. R.P. STA. 395+64.32, 75.70' LT. P.T. STA. 395+64.32, 55.70' LT.</p>	<p>⑪ CURVE DATA EDGE OF PAVEMENT MUP R = 30' T = 30' L = 47.12' P.C. STA. 395+70.00, 55.70' LT. R.P. STA. 395+70.00, 25.70' LT. P.C. STA. 396+00.00, 25.70' LT.</p>	<p>⑫ CURVE DATA EDGE OF PAVEMENT MUP R = 20' T = 20' L = 31.42' P.C. STA. 395+70.00, 45.70' LT. R.P. STA. 395+70.00, 25.70' LT. P.T. STA. 395+90.00, 25.70' LT.</p>

SCALE IN FEET

CALCULATED: _____
 CNK: _____
 CHECKED: _____
 BMH: _____

PLAN - ALTON DARBY CREEK ROAD

ALTON & DARBY CREEK RD. AT CROSSING IMPROVEMENTS

7
17

P-953